

# User Documentation

Installing the J2534 Drivers for Module Analyser

Influx Technology  
[WWW.INFLUXTECHNOLOGY.COM](http://WWW.INFLUXTECHNOLOGY.COM)

# Using a Rebel Logger with Module Analyser

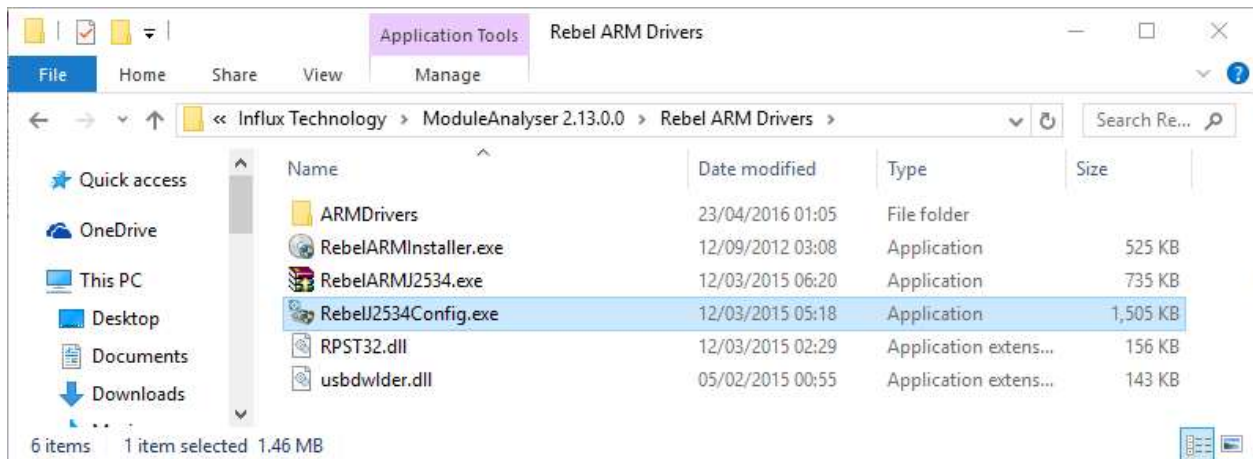
The Rebel Logger is supported in Module Analyser via J2534.

To install and configure module Analyser follow the following steps:

## Step 1

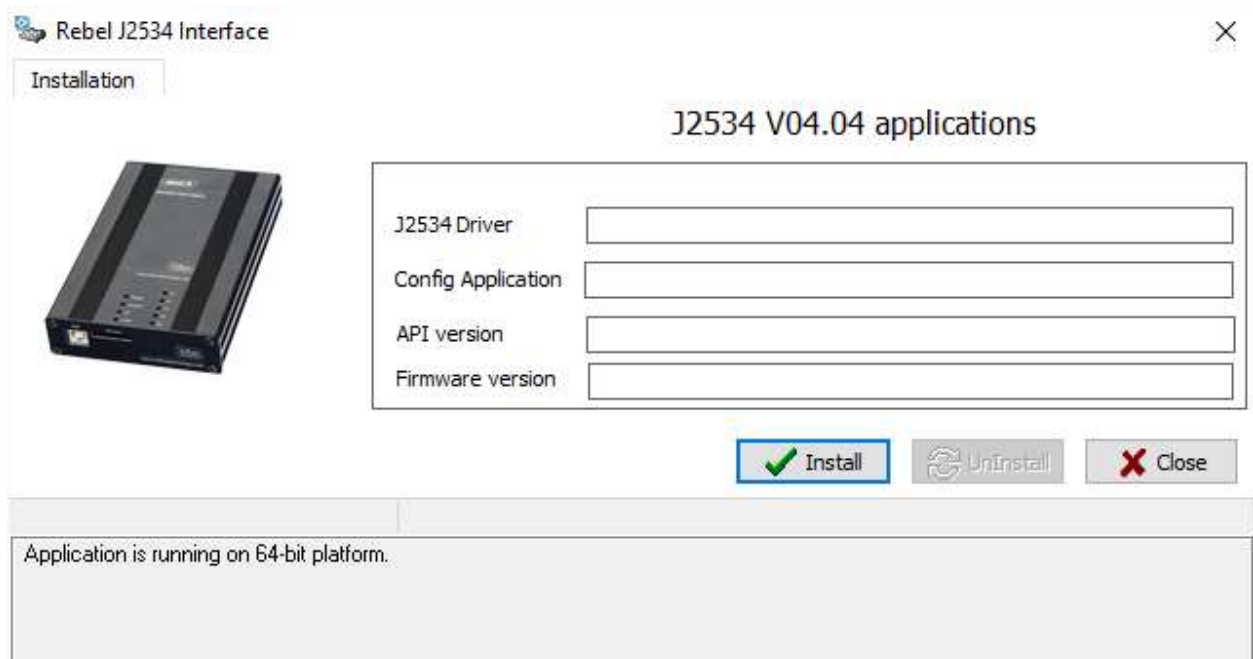
Run the following program:

C:\Program Files (x86)\Influx Technology\ModuleAnalyser 2.13.0.0\Rebel ARM Drivers\RebelJ2534Config.exe



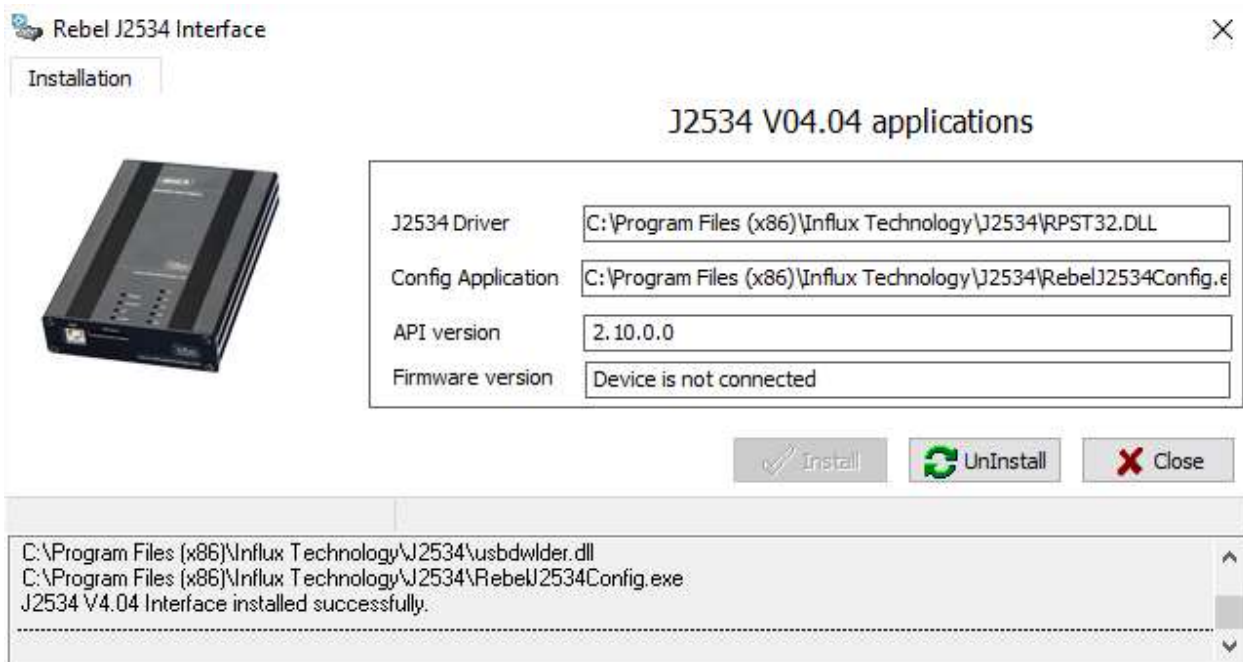
## Step 2)

Click Install



### Step 3

Close the RebelJ2534Config.exe

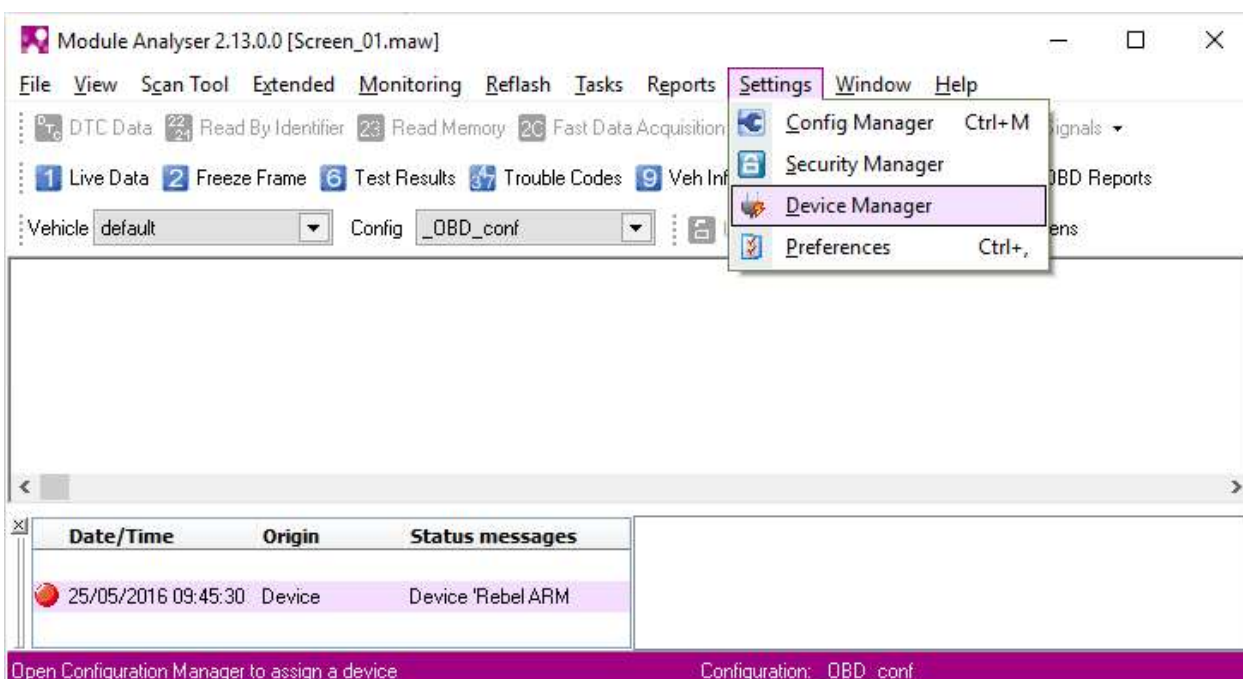


### Step 4

Launch Module Analyser

### Step 5

Go to the Device Manager in the Settings Tab

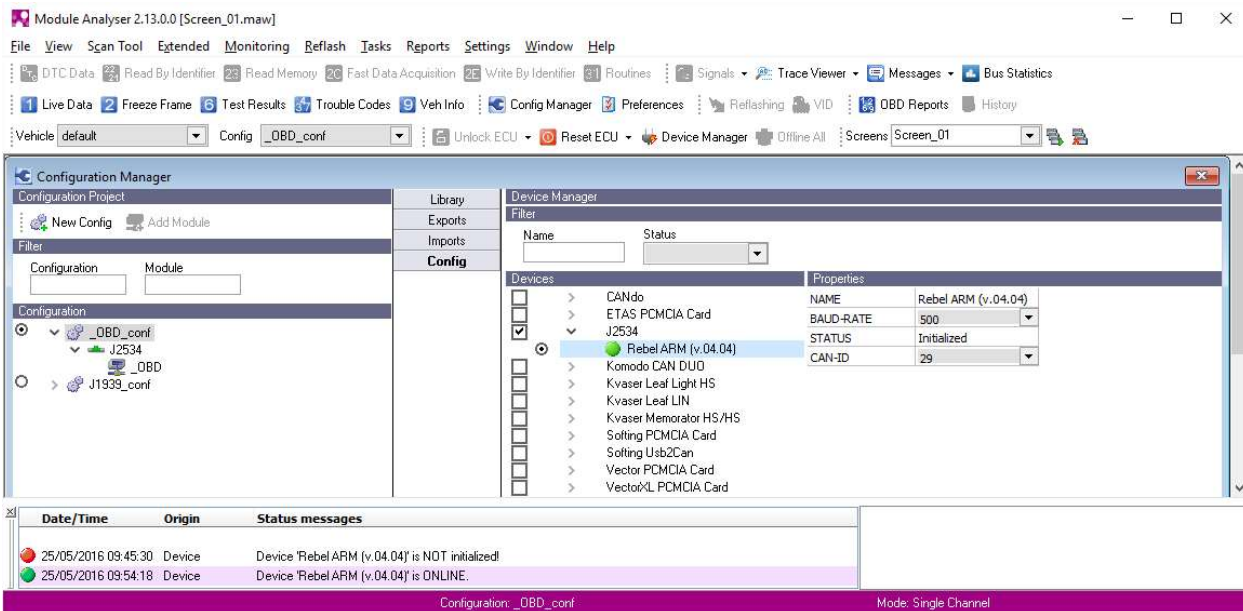


## Step 6

Connect the Rebel Logger via USB

## Step 7

Select the Rebel ARM (v.04.04) Driver in the J2534 Section and make adjustments to the CAN baud rate to suit your application if required.



The screenshot shows the 'Configuration Manager' window in the Module Analyser software. The 'Configuration Project' is set to '\_OBD\_conf'. In the 'Library' pane, the 'J2534' section is expanded, and the 'Rebel ARM (v.04.04)' driver is selected. The 'Properties' table for this device is as follows:

Property	Value
NAME	Rebel ARM (v.04.04)
BAUD-RATE	500
STATUS	Initialized
CAN-ID	29

At the bottom of the window, a status message log shows:

Date/Time	Origin	Status messages
25/05/2016 09:45:30	Device	Device 'Rebel ARM (v.04.04)' is NOT initialized!
25/05/2016 09:54:18	Device	Device 'Rebel ARM (v.04.04)' is ONLINE.

The bottom status bar indicates 'Configuration: \_OBD\_conf' and 'Mode: Single Channel'.

Your Rebel Logger is now ready to use with Module Analyser